



**Transys  
Electronics  
LIMITED**

**MD/MDL 25000C/A Series - 25 Amp  
MD/MDL 35000C/A Series - 35 Amp  
MD/MDL 50000C/A Series - 50 Amp**

**Rectifier Automotive Diode**

## Data Sheet

### Features

- Oxide Passivated EPI Die
- Low Forward Voltage
- Low Leakage
- High Temperature Solder Compatible

Coloured ring denotes cathode



MD Series  
Nominal 8.5mm

Button Diode

MDL Series  
Nominal 10mm

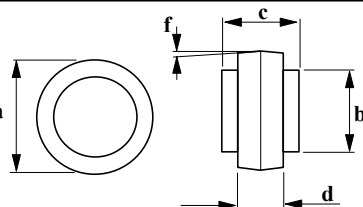
Characteristics at 25° C	Reverse Voltage	RMS Reverse Voltage	Maximum Forward Voltage @ t = 300µS	Average Rectified Output Current	No- Repetitive Peak Forward Surge Current	Maximum Reverse Current @ V <sub>R</sub>	Reverse Recovery Time @ IF=0.5A	Outline
Type Number	V <sub>RRM</sub> , V <sub>RWM</sub> , V <sub>R</sub> Volt	V <sub>RMS</sub> Volt	V <sub>F</sub> @ 75A Volt	I <sub>F</sub> (AVG) Amp	I <sub>FSM</sub> Amp	I <sub>R</sub> nA	T <sub>RR</sub> µS	
MD25050/MDL25050	50	35	1.05	25	400	200	3	1
MD25100/MDL25100	100	70						
MD25200/MDL25200	200	140						
<b>MD25400/MDL25400</b>	400	280						
MD25600/MDL25600	600	420						
MD25800/MDL25800	800	560						
MD251000/MDL251000	1000	700						
Type Number	V <sub>RRM</sub> , V <sub>RWM</sub> , V <sub>R</sub> Volt	V <sub>RMS</sub> Volt	V <sub>F</sub> @ 100A Volt	I <sub>F</sub> (AVG) Amp	I <sub>FSM</sub> Amp	I <sub>R</sub> nA	T <sub>RR</sub> µS	
MD35050/MDL35050	50	35	1.05	35	500	200	3	1
MD35100/MDL35100	100	70						
MD35200/MDL35200	200	140						
MD35400/MDL35400	400	280						
MD35600/MDL35600	600	420						
MD35800/MDL35800	800	560						
MD351000/MDL351000	1000	700						
Type Number	V <sub>RRM</sub> , V <sub>RWM</sub> , V <sub>R</sub> Volt	V <sub>RMS</sub> Volt	V <sub>F</sub> @ 100A Volt	I <sub>F</sub> (AVG) Amp	I <sub>FSM</sub> Amp	I <sub>R</sub> nA	T <sub>RR</sub> µS	
MD50050/MDL50050	50	35	1.05	50	600	200	3	1
MD50100/MDL50100	100	70						
MD50200/MDL50200	200	140						
MD50400/MDL50400	400	280						
MD50600/MDL50600	600	420						
MD50800/MDL50800	800	560						
MD501000/MDL501000	1000	700						

\* The characteristics above assume the die are assembled in industry standard packages using appropriate attach methods

Maximum Operating Temperature Range -65 to +200 ° C  
Maximum Storage Temperature Range -65 to +200 ° C

## Mechanical Dimensions

Outline 1



Dim	Inches		Millimetres	
	Min	Max	Min	Max
a	0.326	0.350	8.30	8.90
b	0.216	0.224	5.50	5.701
c	0.236	0.251	6.00	6.40
d	0.165	0.185	4.20	4.70
f	5° Nominal		5° Nominal	

Dim	Inches		Millimetres	
	Min	Max	Min	Max
a	0.370	0.409	9.70	10.40
b	0.216	0.224	5.50	5.701
c	0.236	0.251	6.00	6.40
d	0.165	0.185	4.20	4.70
f	5° Nominal		5° Nominal	

The information in this datasheet does not form part of any contract, quotation guarantee, warranty or representation, it has been produced in good faith and is believed to be accurate and may be changed without notice at any time. Liability will not be accepted by Transys Electronics LTD for any consequences whatsoever in its use. This publication does not convey nor imply any license under patent or other intellectual/industrial property rights. The products within this specification are not designed for use in any life support apparatus whatsoever where malfunction can be reasonably expected to cause personal injury or death. Customers using these products in the aforementioned applications do so at their own risk and agree to fully indemnify Transys Electronics LTD for any damage/ legal fees either direct, incidental or consequential from this improper use or sale.



**Transys Electronics LTD**  
Birmingham UK.  
Email: [sales@transyselectronics.com](mailto:sales@transyselectronics.com)  
Website: [www.transyselectronics.com](http://www.transyselectronics.com)  
Tel: 44 (0) 121 776 6321  
Fax 44 (0) 121 776 6997

SCD0729-1