

ER2A THRU ER2J

SURFACE MOUNT SUPERFAST RECTIFIER VOLTAGE - 50 to 600 Volts CURRENT - 2.0 Amperes

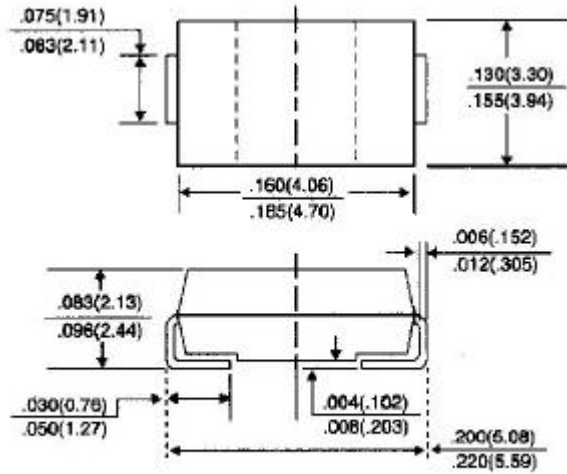
FEATURES

- For surface mounted applications
- Low profile package
- Built-in strain relief
- Easy pick and place
- Superfast recovery times for high efficiency
- Plastic package has Underwriters Laboratory

Flammability Classification 94V-O

- Glass passivated junction
- High temperature soldering:
260 /10 seconds at terminals

SMB/DO-214AA



Dimensions in inches and (millimeters)

MECHANICAL DATA

Case: JEDEC DO-214AA molded plastic

Terminals: Solder plated, solderable per MIL-STD-750,

Method 2026

Polarity: Indicated by cathode band

Standard packaging: 12mm tape (EIA-481)

Weight: 0.003 ounce, 0.093 gram

MAXIMUM RATINGS AND ELECTRICAL CHARACTERISTICS

Ratings at 25 °C ambient temperature unless otherwise specified.

Single phase, half wave, 60Hz, resistive or inductive load.

For capacitive load, derate current by 20%.

	SYMBOLS	ER2A	ER2B	ER2C	ER2D	ER2E	ER2G	ER2J	UNITS
Maximum Recurrent Peak Reverse Voltage	V_{RRM}	50	100	150	200	300	400	600	Volts
Maximum RMS Voltage	V_{RMS}	35	70	105	140	210	280	420	Volts
Maximum DC Blocking Voltage	V_{DC}	50	100	150	200	300	400	600	Volts
Maximum Average Forward Rectified Current, at $T_L=110$	$I_{(AV)}$	2.0							Amps
Peak Forward Surge Current 8.3ms single half sine-wave superimposed on rated load(JEDEC method)	I_{FSM}	50.0							Amps
Maximum Instantaneous Forward Voltage at 2.0A	V_F	0.95			1.25		1.7		Volts
Maximum DC Reverse Current $T_A=25$ At Rated DC Blocking Voltage $T_A=100$	I_R	5.0 150							A
Maximum Reverse Recovery Time (Note 1)	T_{RR}	35.0							nS
Typical Junction capacitance (Note 2)	C_J	25.0							pF
Typical Thermal Resistance (Note 3)	R_{JL}	20.0							/W
Operating and Storage Temperature Range	T_J, T_{STG}	-50 to +150							

NOTES:

1. Reverse Recovery Test Conditions: $I_F=0.5A$, $I_R=1.0A$, $I_{rr}=0.25A$
2. Measured at 1 MHz and Applied reverse voltage of 4.0 volts
3. $8.0mm^2$ (.013mm thick) land areas

RATING AND CHARACTERISTIC CURVES ER2A THRU ER2J

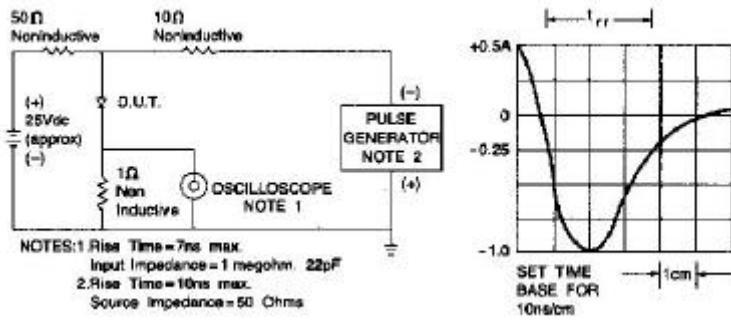


Fig. 1-REVERSE RECOVERY TIME CHARACTERISTIC AND TEST DIAGRAM

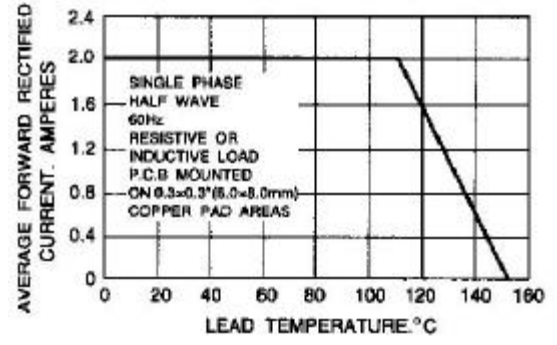


Fig. 2-MAXIMUM AVERAGE FORWARD CURRENT RATING

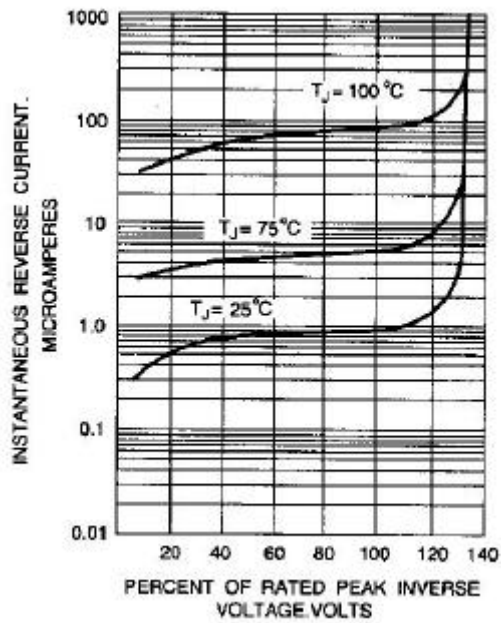


Fig. 3-TYPICAL REVERSE CHARACTERISTICS

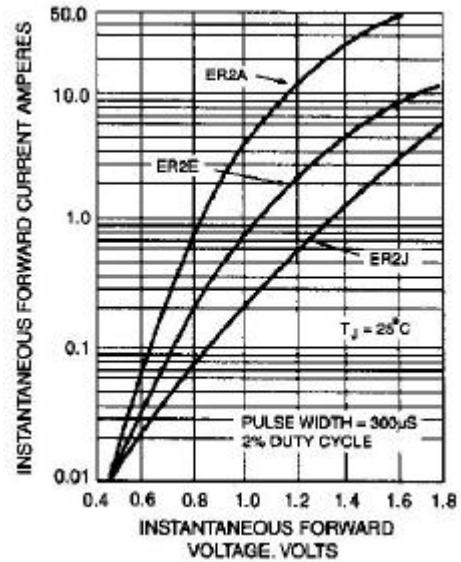


Fig. 4-TYPICAL FORWARD CHARACTERISTICS

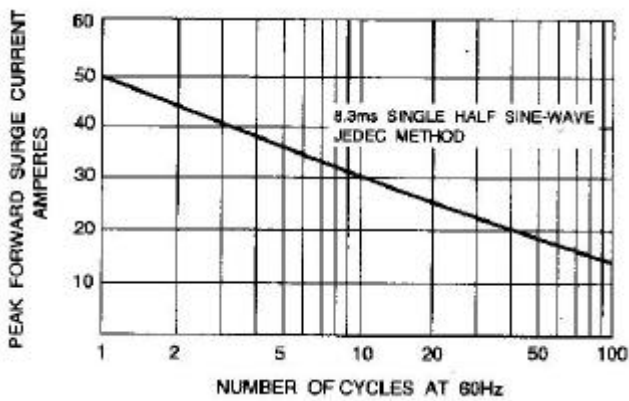


Fig. 5-MAXIMUM NON-REPETITIVE PEAK FORWARD SURGE CURRENT

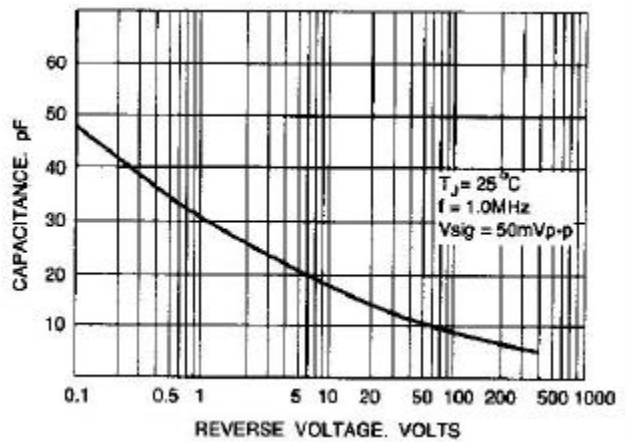


Fig. 6-TYPICAL JUNCTION CAPACITANCE