

Thyristors

T16



Technical Data

Typical applications : D.C. Motor control, Controlled rectifiers, A.C. Controllers

Type No.	V _{RRM} (Volts)	V _{RSM} (Volts)
T16/04	400	500
T16/06	600	700
T16/08	800	900
T16/10	1000	1100
T16/12	1200	1300
T16/14	1400	1500
T16/16	1600	1700

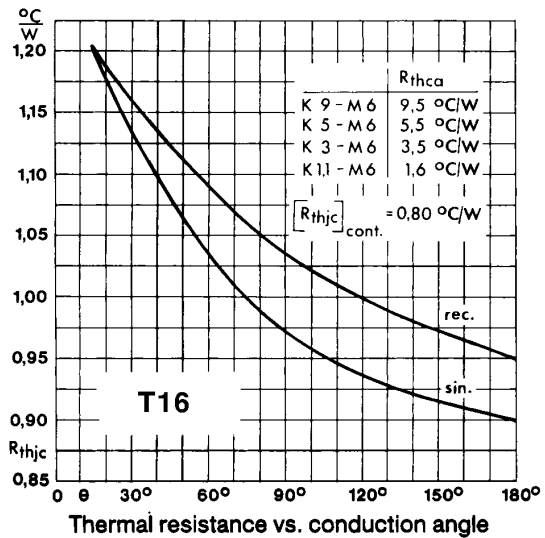
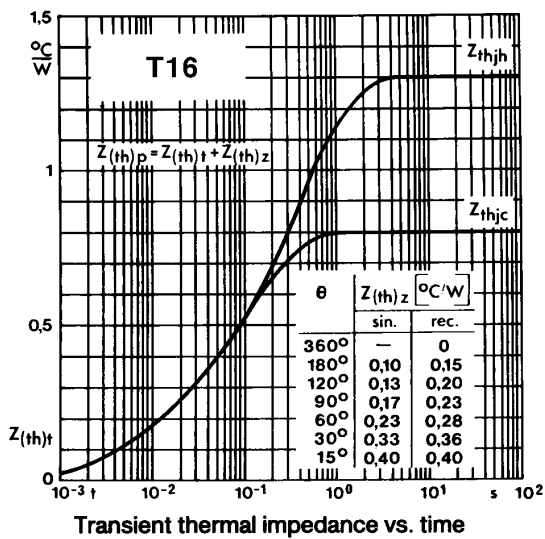
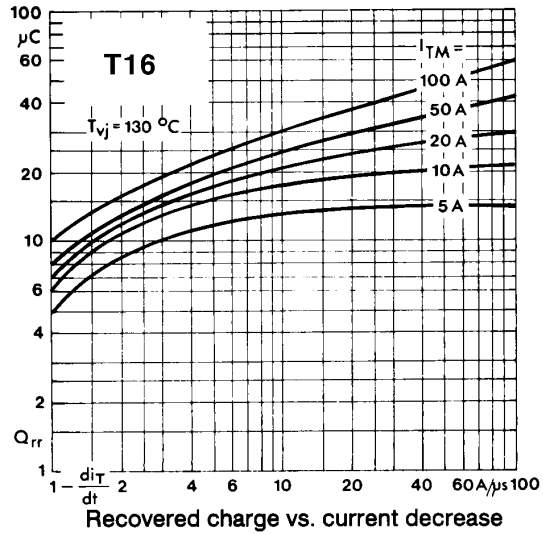
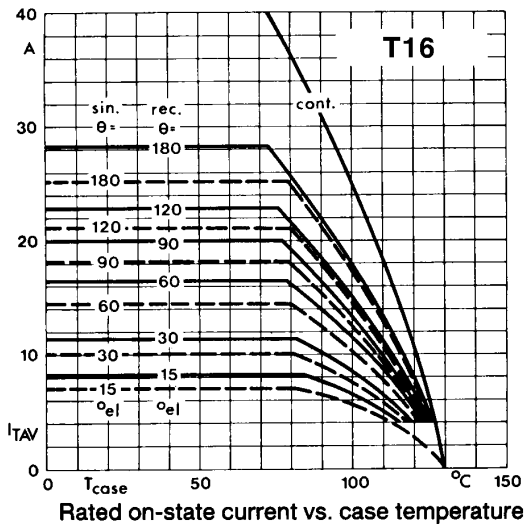
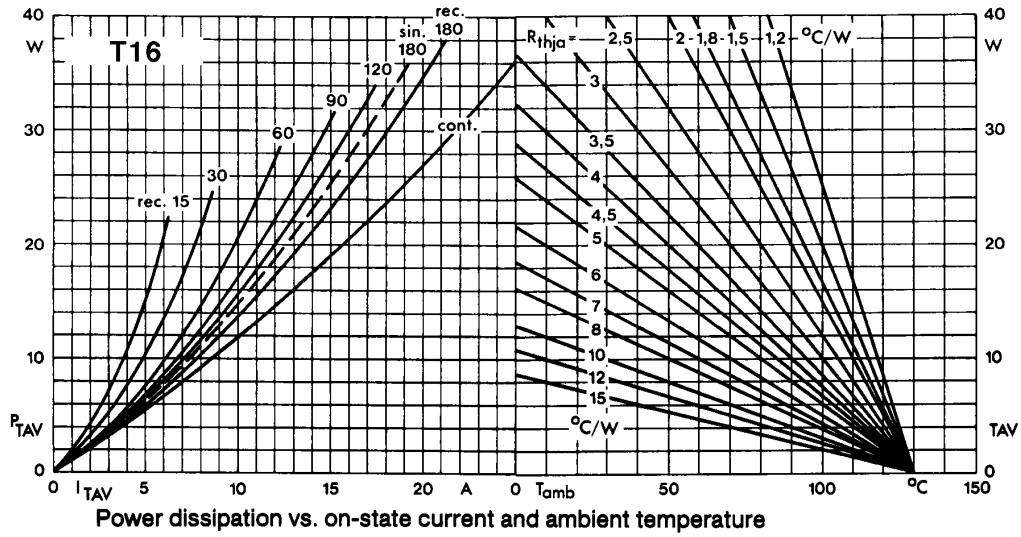
Features

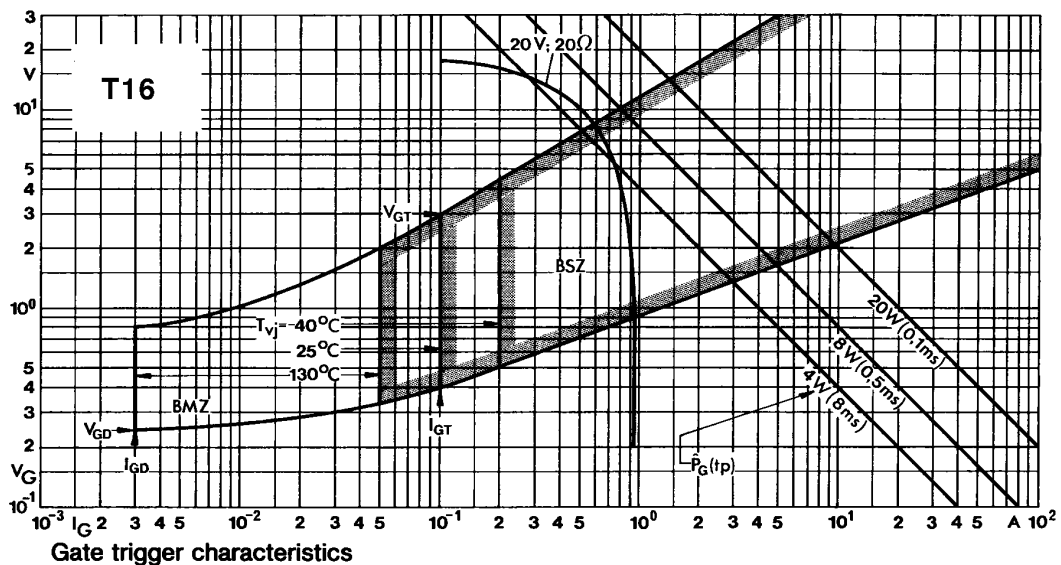
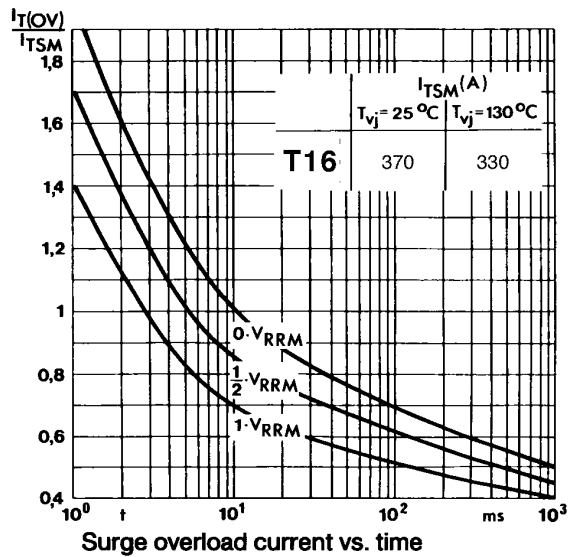
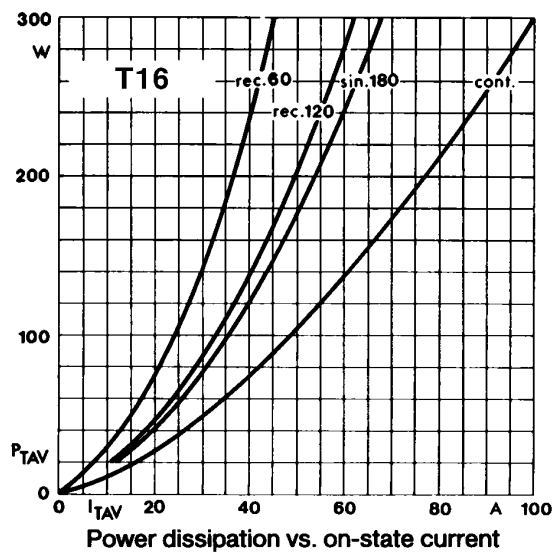
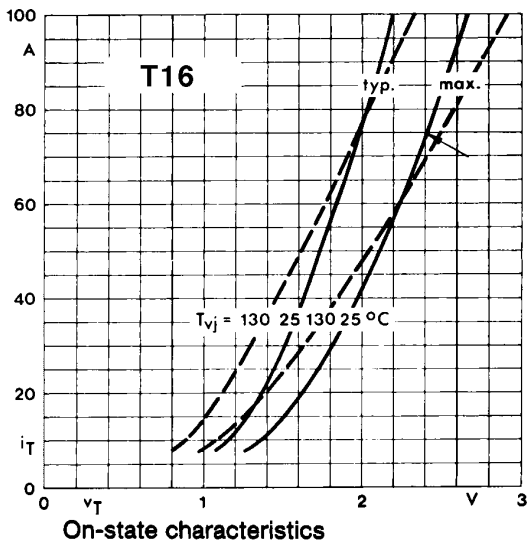
- Hermetic glass to metal seal
- Voltage grade upto 1600V
- Weight 12 gm (Approx)

Symbol	Conditions	Values
I _{T(AV)}	Sin 180 ; T _{case} = 103 °C	16 A
I _{TSM}	T _{vj} = 25 °C T _{vj} = 130 °C	370 A 330 A
I ² t	T _{vj} = 25 °C T _{vj} = 130 °C	680 A ² s 550 A ² s
I _{GT} V _{GT} dv/dt [di/dt] _{CR}	T _{vj} = 25 °C; V _{DRM} = 5V T _{vj} = 25 °C; V _{DRM} = 5V T _{vj} = 130 °C ; Voltage = 67 % V _{DRM}	100 mA 3V *200 V/μs 50 A/μs
V _T V ₀ R ₀ I _{RRM} /I _{DRM}	T _{vj} = 25 °C ; I _T = 75A T _{vj} = 130 °C T _{vj} = 130 °C T _{vj} = 130 °C	2.4 V max 1.0V 20 m 8 mA
I _H I _L		Typ 80 mA; max. 150 mA Typ 150 mA; max. 300 mA
R _{th(j-c)} R _{th(c-h)} T _{vj} T _{stg}	Cont. Sin 180 / rec. 120	0.80 °C/W 0.90 / 0.95 °C/W 0.50 °C/W + 130 °C -40.....+ 150 °C
Mounting torque		2.5 Nm
Case outline		N

* Higher dv/dt selection available on request



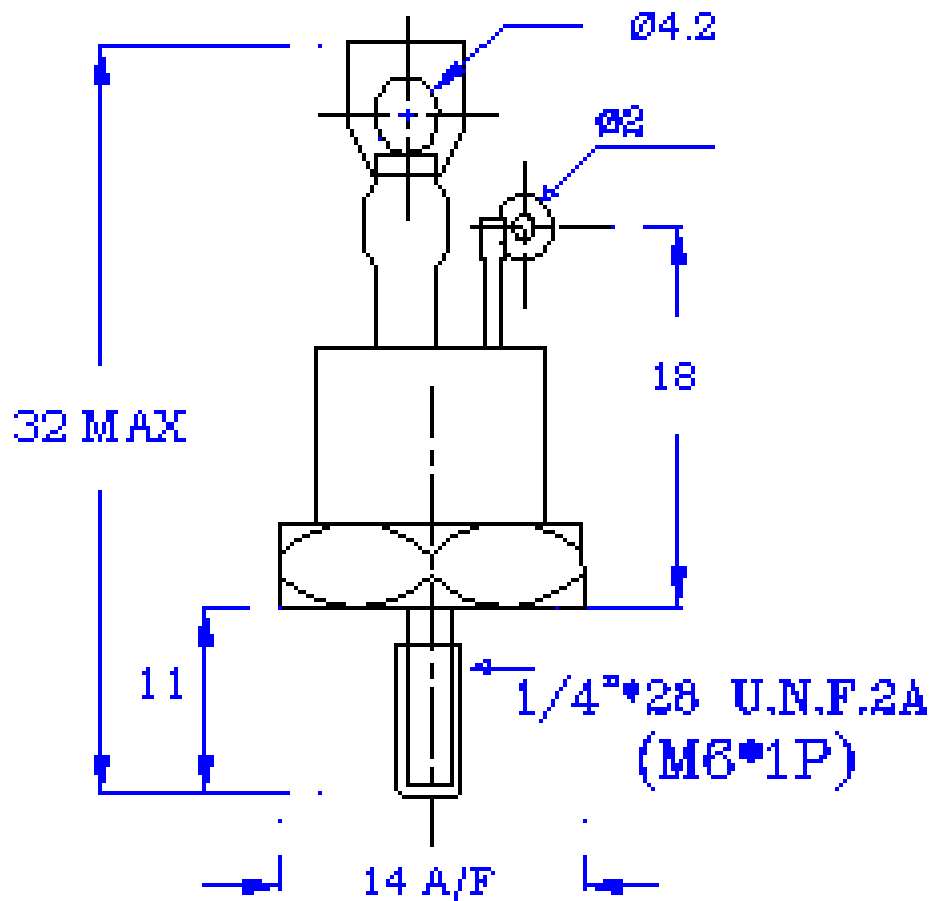




PACAKAGE DEATILS

DO NOT SCALE

All Dimensions in mm



Alt : Also available with pigtail

Mounting Torque: 2.5Nm **N**