

Thyristors

T25

Technical Data

Typical applications : D.C. Motor control, Controlled rectifiers, A.C. Controllers

Type No.	V_{RRM} (Volts)	V_{RSM} (Volts)
T25/04	400	500
T25/06	600	700
T25/08	800	900
T25/10	1000	1100
T25/12	1200	1300
T25/14	1400	1500
T25/16	1600	1700

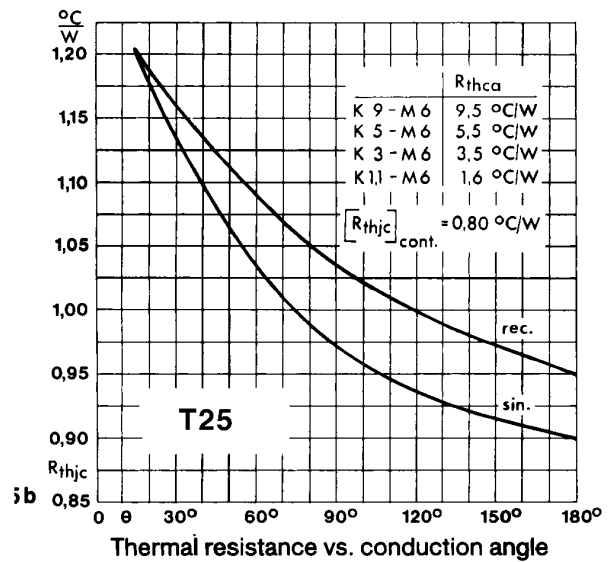
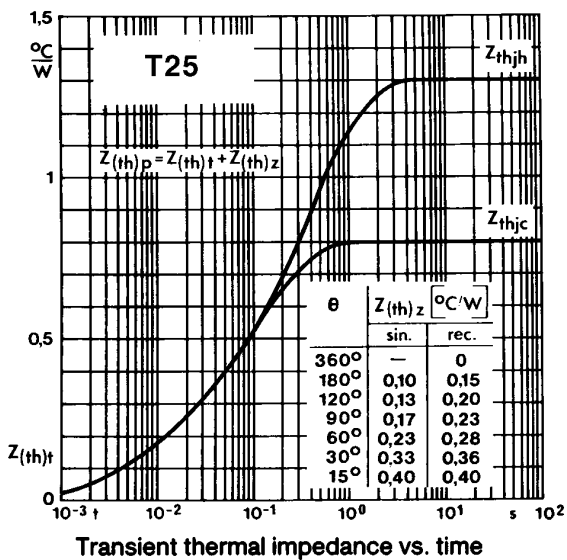
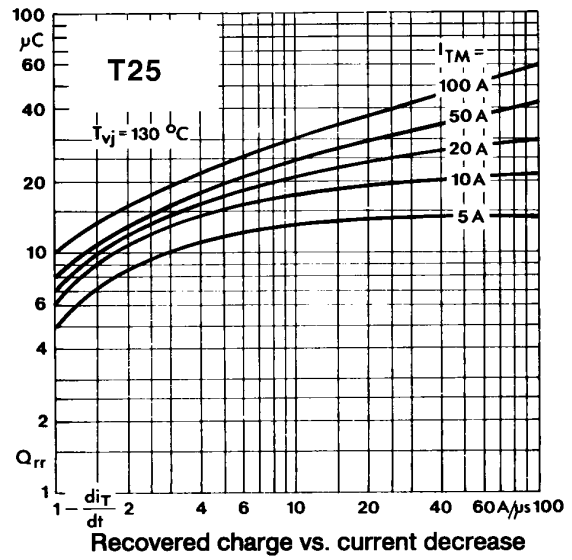
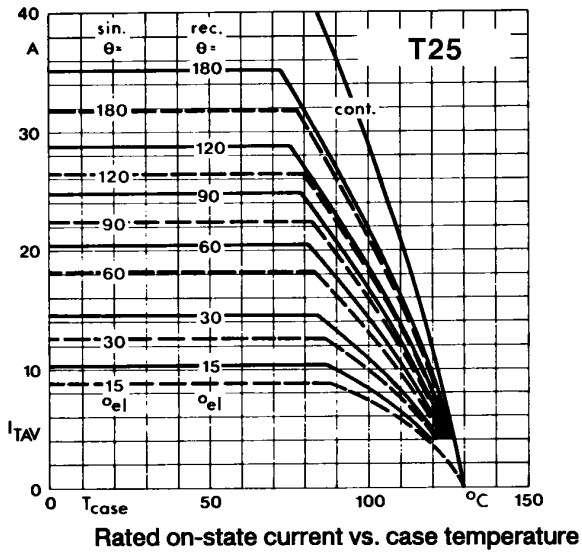
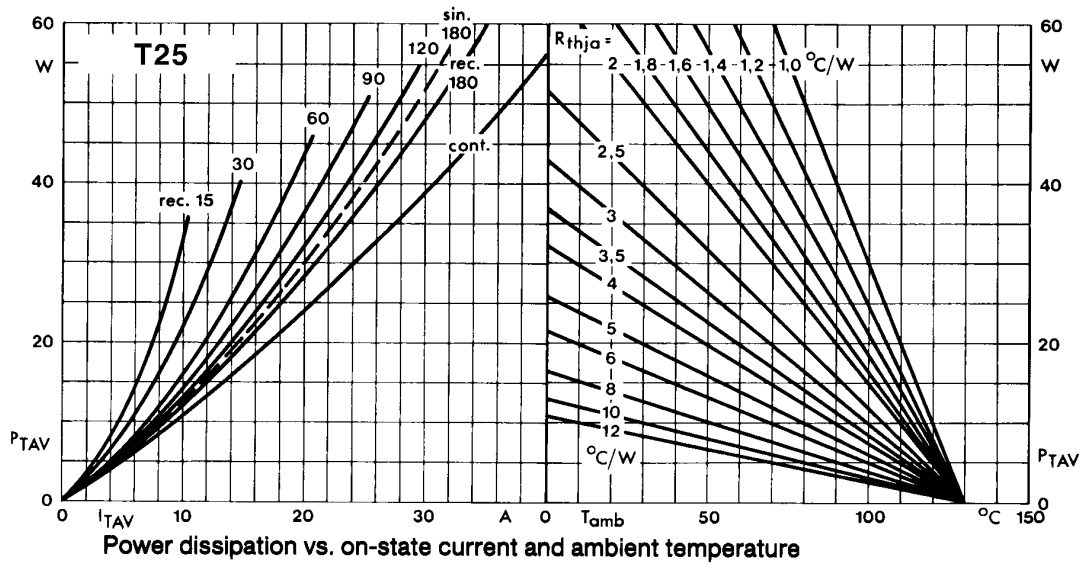
Features

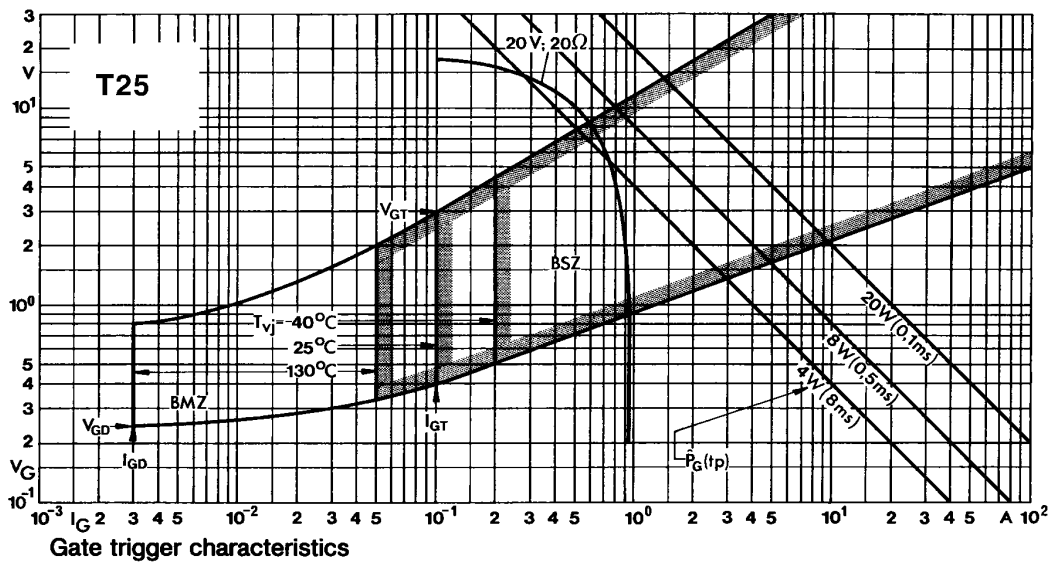
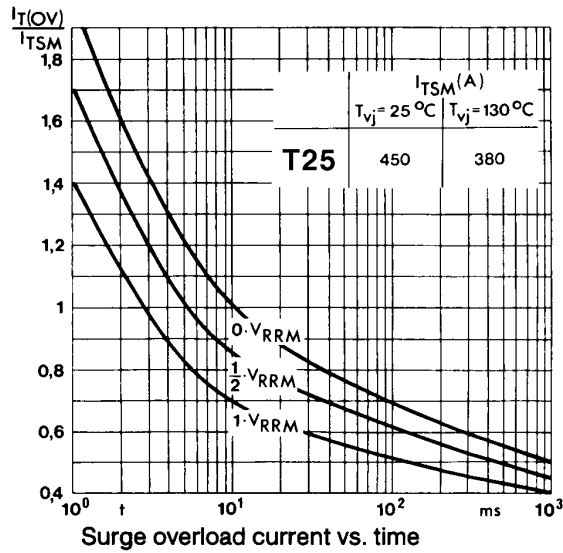
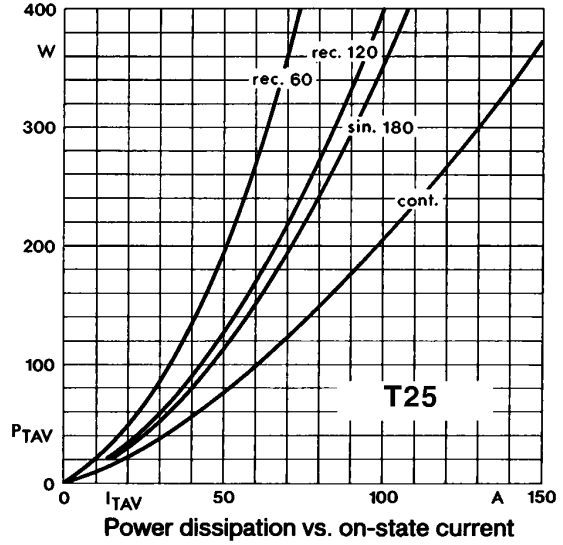
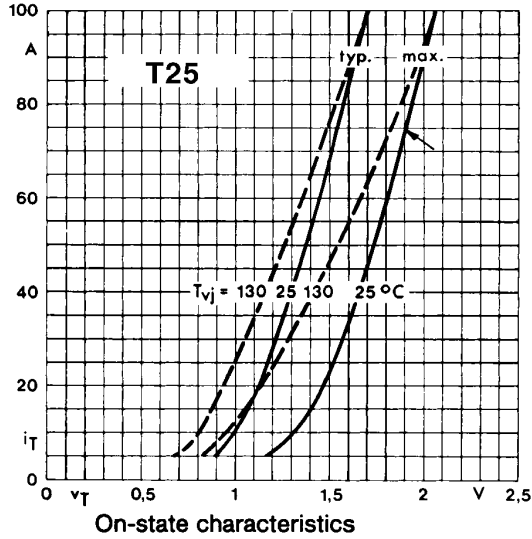
- Hermetic glass to metal seal
- Voltage grade upto 1600V
- Weight 12 gm (Approx)

Symbol	Conditions	Values
$I_{T(AV)}$	Sin 180 ; $T_{case} = 94\text{ }^{\circ}\text{C}$	25 A
I_{TSM}	$T_{vj} = 25\text{ }^{\circ}\text{C}$	450 A
	$T_{vj} = 130\text{ }^{\circ}\text{C}$	380 A
I^2t	$T_{vj} = 25\text{ }^{\circ}\text{C}$	1000 A ² s
	$T_{vj} = 130\text{ }^{\circ}\text{C}$	720 A ² s
I_{GT} V_{GT} dv/dt $[di/dt]_{CR}$	$T_{vj} = 25\text{ }^{\circ}\text{C}; V_{DRM} = 5V$	100 mA
	$T_{vj} = 25\text{ }^{\circ}\text{C}; V_{DRM} = 5V$	3V
	$T_{vj} = 130\text{ }^{\circ}\text{C}; \text{Voltage} = 67\% V_{DRM}$	*200 V/ μ s 50 A/ μ s
V_T V_0 R_0 I_{RRM}/I_{DRM}	$T_{vj} = 25\text{ }^{\circ}\text{C}; I_T = 75A$	1.90V max
	$T_{vj} = 130\text{ }^{\circ}\text{C}$	1.0V
	$T_{vj} = 130\text{ }^{\circ}\text{C}$	10 m
	$T_{vj} = 130\text{ }^{\circ}\text{C}$	8 mA
I_H I_L		Typ 80 mA; max. 150 mA Typ 150 mA; max. 300 mA
	$R_{th(j-c)}$	Cont. Sin 180 / rec. 120
$R_{th(c-h)}$ T_{vj} T_{stg}		0.50 $^{\circ}\text{C}/\text{W}$ + 130 $^{\circ}\text{C}$ -40.....+ 150 $^{\circ}\text{C}$
	Mounting torque	2.5 Nm
	Case outline	N

* Higher dv/dt selection available on request



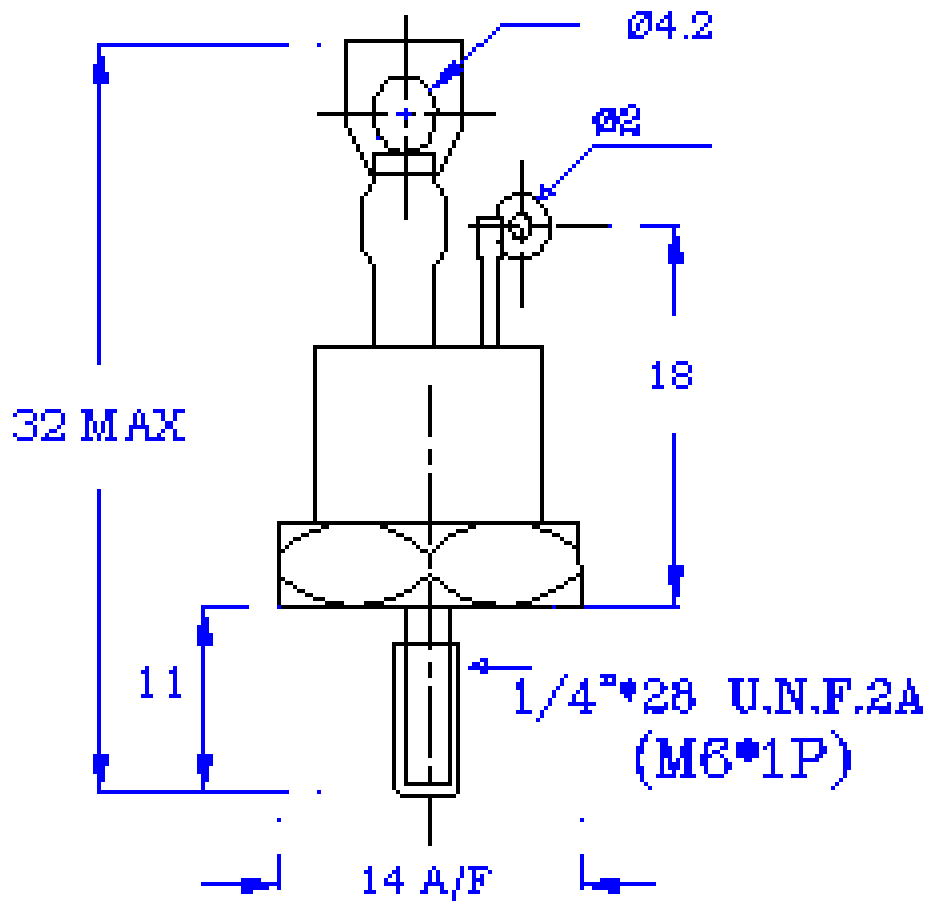




PACAKAGE DEATILS

DO NOT SCALE

All Dimensions in mm



Alt : Also available with pigtail

Mounting Torque: 2.5Nm **N**