

600 V - 1,000 V Rectifiers
0.50 A - 1.00 A Forward Current
30 ns - 50 ns Recovery Time

X06FF3L X06FF5L
X10FF3L X10FF5L

SURFACE MOUNT
HERMETICALLY SEALED



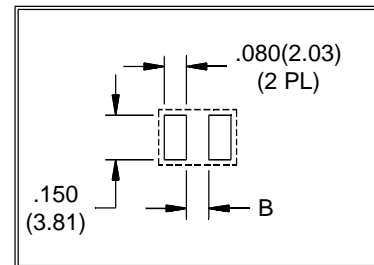
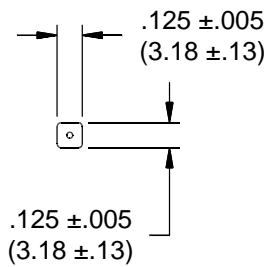
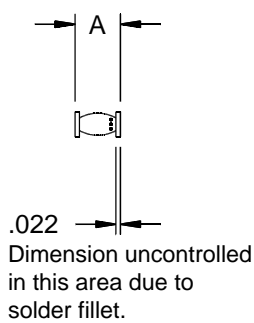
ELECTRICAL CHARACTERISTICS AND MAXIMUM RATINGS

Part Number	Working Reverse Voltage (V _{rw})	Average Rectified Current (I _o)		Reverse Current @ V _{rw} (I _r)		Forward Voltage (V _f)		1 Cycle Surge Current t _p =8.3ms (I _{fsm})	Repetitive Surge Current (I _{frm})	Reverse Recovery Time (3) (T _{rr})	Thermal Impd. θ _{J-C}	Junction Cap. @50VDC @1kHz (C _j)	
		Volts	55°C(1)	100°C(2)	25°C	100°C	25°C	25°C	25°C	25°C	25°C	25°C	25°C
			Amps	Amps	µA	µA	Volts	Amps	Amps	Amps	ns	°C/W	pF
X06FF3L X10FF3L	600 1000	0.60 0.50	0.30 0.25	1.0 1.0	20 20	3.0 5.0	0.75 0.75	16 12	3.0 2.0	30 30	5.0 5.0	16 16	
X06FF5L X10FF5L	600 1000	1.00 0.80	0.50 0.40	1.0 1.0	20 20	2.0 2.2	0.75 0.75	16 12	3.0 2.0	50 50	5.0 5.0	16 16	

(1)TC=55°C (2)TC=100°C (3)I_f=0.5A, I_r=1.0A, I_{rr}=0.25A *Op. Temp.= -65°C to +175°C Stg. Temp.= -65°C to +200°C

6

Markings:
 Three Dots for polarity.



Part	A	B
X06FF3L	.225(5.72)	.130(3.30)
X10FF3L	.235(5.97)	.140(3.56)
X06FF5L X10FF5L	.225(5.72)	.130(3.30)



Dimensions: In. (mm) • All temperatures are ambient unless otherwise noted. • Data subject to change without notice.



VOLTAGE MULTIPLIERS INC.
 8711 W. Roosevelt Ave.
 Visalia, CA 93291

TEL 559-651-1402
 FAX 559-651-0740
 www.voltagemultipliers.com

X06FF3L X10FF3L X06FF5L X10FF5L

