

200 V - 1,000 V Rectifiers
15.0 A Forward Current
70 ns - 3000 ns Recovery Time

Z02UL - Z10UL
Z02FL - Z10FL
Z02SL - Z10SL

SURFACE MOUNT
HERMETICALLY SEALED

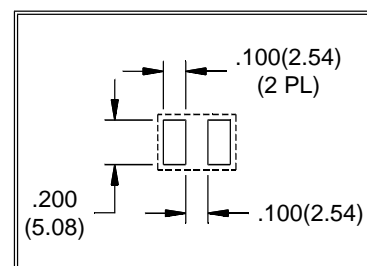
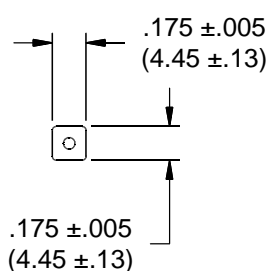
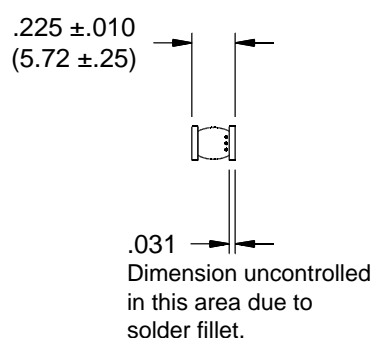


ELECTRICAL CHARACTERISTICS AND MAXIMUM RATINGS

| Part Number | Working Reverse Voltage (V _{rw}) | Average Rectified Current (I _o) | | Reverse Current @ V _{rw} (I _r) | | Forward Voltage (V _f) | | 1 Cycle Surge Current t _p =8.3ms (I _{fsm}) | Repetitive Surge Current (I _{frm}) | Reverse Recovery Time (3) (T _{rr}) | Thermal Impd. θ _{J-C} | Junction Cap. @50VDC @1kHz (C _j) |
|-------------|---|--|----------|--|-------|--------------------------------------|------|--|---|---|-----------------------------------|---|
| | | 55°C(1) | 100°C(2) | 25°C | 100°C | 25°C | 25°C | 25°C | 25°C | 25°C | 25°C | 25°C |
| | | Amps | Amps | μA | μA | Volts | Amps | Amps | Amps | ns | °C/ W | pF |
| Z02UL | 200 | 15.0 | 10.0 | 1.0 | 25 | 1.7 | 9.0 | 100 | 25 | 70 | 3 | 35 |
| Z06UL | 600 | 15.0 | 10.0 | 1.0 | 25 | 1.7 | 9.0 | 100 | 25 | 70 | 3 | 35 |
| Z10UL | 1000 | 15.0 | 10.0 | 1.0 | 25 | 2.1 | 9.0 | 100 | 25 | 70 | 3 | 35 |
| Z02FL | 200 | 15.0 | 10.0 | 1.0 | 25 | 1.5 | 9.0 | 100 | 25 | 150 | 3 | 35 |
| Z06FL | 600 | 15.0 | 10.0 | 1.0 | 25 | 1.5 | 9.0 | 100 | 25 | 150 | 3 | 35 |
| Z10FL | 1000 | 15.0 | 10.0 | 1.0 | 25 | 1.8 | 9.0 | 100 | 25 | 150 | 3 | 35 |
| Z02SL | 200 | 15.0 | 10.0 | 1.0 | 25 | 1.1 | 9.0 | 150 | 25 | 3000 | 3 | 35 |
| Z06SL | 600 | 15.0 | 10.0 | 1.0 | 25 | 1.1 | 9.0 | 150 | 25 | 3000 | 3 | 35 |
| Z10SL | 1000 | 15.0 | 10.0 | 1.0 | 25 | 1.2 | 9.0 | 150 | 25 | 3000 | 3 | 35 |

(1)TC=55°C (2)TC=100°C (3)I_f=0.5A, I_r=1.0A, I_{rr}=0.25A *Op. Temp.= -65°C to +175°C Stg. Temp.= -65°C to +200°C

Markings:
Three Dots for polarity.



Dimensions: In. (mm) • All temperatures are ambient unless otherwise noted. • Data subject to change without notice.



VOLTAGE MULTIPLIERS INC.
8711 W. Roosevelt Ave.
Visalia, CA 93291

TEL 559-651-1402
FAX 559-651-0740
www.voltagemultipliers.com

Z02UL - Z10UL • Z02FL - Z10FL • Z02SL - Z10SL

