

Features

128Kx32 bit CMOS Static

Analog SHARC™ External Memory Solution

- ADSP-21060L
- ADSP-21062L

Random Access Memory Array

- Fast Access Times: 12,15 and 20ns
- User Configurable Organization with Minimal Additional Logic
- Master Output Enable and Write Control
- TTL Compatible Inputs and Outputs
- Fully Static, No Clocks

Surface Mount Package

- 68 Lead PLCC, No. 99 (JEDEC MO-47AE)
- Small Footprint, 0.990 Sq. In.
- Multiple Ground Pins for Maximum Noise Immunity

Single 3.3V (±5%) Supply Operation

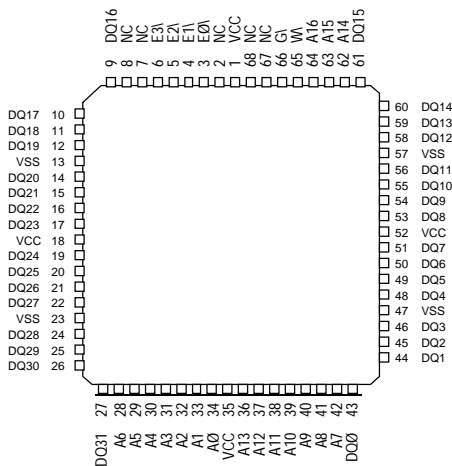
128Kx32 CMOS High Speed Static RAM

The EDI8L32128V is a high speed, 3.3 volt, four megabit density Static RAM. The device is available with access times of 12, 15 and 20ns, allowing the device to support 60MHz DSPs with no wait states. The high speed, 3.3V supply voltage and byte configurability make the device ideal for interfacing with Analog Devices ADSP-21062L or ADSP-21060L SHARC DSPs.

The device can be configured as a 128Kx32 and used to create a single chip external data memory solution for the SHARC (figure 1). Providing a 51% space savings when compared to four 128Kx8, 400mil wide plastic SOJs. the EDI8L32128V has a 10pf load on the data lines vs. 24pf for four plastic SOJs. Memory upgrades in the same footprint can be accomplished with the EDI8L32256V (256Kx32) or the EDI8L32512V (512Kx32). This is covered in detail in the application report "The EDI's x32 MCM-L SRAM Family: Integrated Memory Solution for the Analog SHARC DSP" Alternatively the device's chip enables can configure it as a 256Kx16. A 256Kx48 program memory array for the SHARC is created using three devices (figure 2). If this memory is too deep, two 128Kx24's (EDI8L24128V) can be used to create a 128Kx48 memory array.

Pin Configurations and Block Diagram

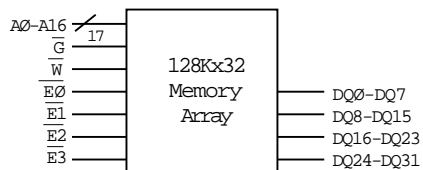
Note: Solder Reflow temperature should not exceed 260°C for 10 seconds



Pin Names

A0-A16	Address Inputs
E0-E3	Chip Enables (One per Byte)
W	Master Write Enable
G	Master Output Enable
DQ0-DQ31	Common Data Input/Output
VCC	Power (+3.3V±10%)
VSS	Ground
NC	No Connection

Note: Pin 2 & 67 on the 64Kx32 (EDI8L3265C) and the 256Kx32 (EDI8L32256C) are word select pins.



Absolute Maximum Ratings*

Voltage on any pin relative to VSS	-0.5V to 4.6V
Operating Temperature TA (Ambient)	
Commercial	0°C to +70°C
Industrial	-40°C to +85°C
Storage Temperature	-55°C to +125°C
Power Dissipation	3 Watts
Output Current	20 mA
Junction Temperature, TJ	175°C

*Stress greater than those listed under "Absolute Maximum Ratings" may cause permanent damage to the device. This is a stress rating only and functional operation of the device at these or any other conditions greater than those indicated in the operational sections of this specification is not implied. Exposure to absolute maximum rating conditions for extended periods may affect reliability.

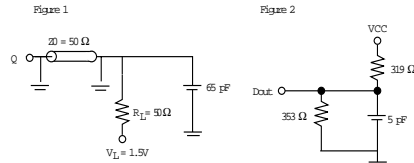
Recommended DC Operating Conditions

Parameter	Sym	Min	Typ	Max	Units
Supply Voltage	VCC	3.135V	3.3	3.465V	V
Supply Voltage	VSS	0	0	0	V
Input High Voltage	VIH	2.2	--	VCC+0.3	V
Input Low Voltage	VIL	-0.3	--	0.8	V

AC Test Conditions

Input Pulse Levels	VSS to 3.0V
Input Rise and Fall Times	5ns
Input and Output Timing Levels	1.5V
Output Load	Figure 1

(note: For TEHQZ,TGHQZ and TWLOZ, CL = 5pF) (see figure 2)



DC Electrical Characteristics

Parameter	Sym	Conditions	Min	Max			Units
				12	15	20	
Operating Power Supply Current	ICC1	\overline{W} = VIL, II/O = 0mA, Min Cycle		680	660	620	mA
Standby (TTL) Supply Current	ICC2	\overline{E} • VIH, VIN- VIL or VIN • VIH, f=0MHz		120	120	120	mA
Full Standby CMOS Supply Current	ICC3	\overline{E} • VCC-0.2V VIN • VCC-0.2V or VIN - 0.2V		40	40	40	mA
Input Leakage Current	ILI	VIN = 0V to VCC		±10			µA
Output Leakage Current	ILO	V I/O = 0V to VCC		±10			µA
Output High Voltage	VOH	IOH = -4.0mA	2.4				V
Output Low Voltage	VOL	IOL = 8.0mA		0.4			V

Typical: TA = 25°C, VCC = 3.3V

Truth Table

\overline{G}	\overline{E}	\overline{W}	Mode	Output	Power
X	H	X	Standby	High Z	ICC2, ICC3
H	L	H	Output Deselect	High Z	ICC1
L	L	H	Read	DOUT	ICC1
X	L	L	Write	DIN	ICC1

Capacitance

(f=1.0MHz, VIN=VCC or VSS)

Parameter	Sym	Max	Unit
Address Lines	CA	40	pF
Data Lines	CD/Q	10	pF
Write & Output Enable Lines	\overline{W} , \overline{G}	40	pF
Chip Enable Lines	$\overline{E0}$ - $\overline{E3}$	8	pF

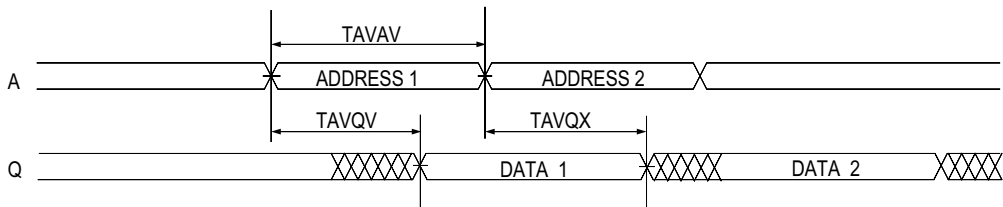
These parameters are sampled, not 100% tested.

AC Characteristics Read Cycle

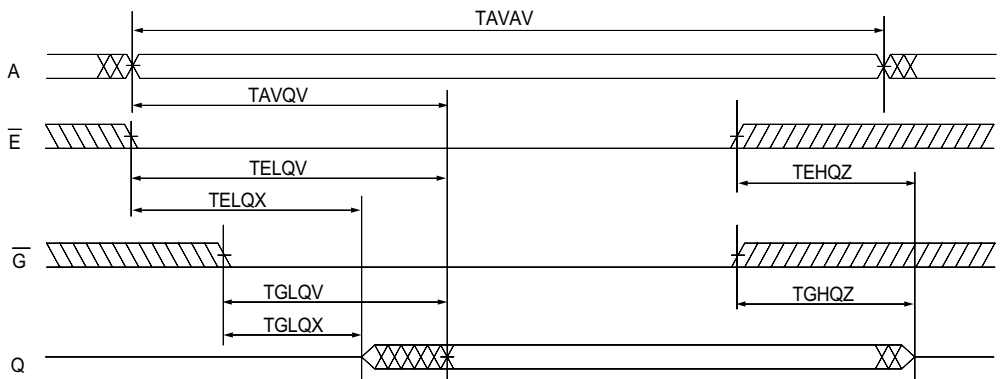
Parameter	Symbol		12ns		15ns		20ns		Units
	JEDEC	Alt.	Min	Max	Min	Max	Min	Max	
Read Cycle Time	TAVAV	TRC	12		15		20		ns
Address Access Time	TAVQV	TAA		12		15		20	ns
Chip Enable Access Time	TELOV	TACS		8		10		20	ns
Chip Enable to Output in Low Z (1)	TELOX	TCLZ	2		3		3		ns
Chip Disable to Output in High Z (1)	TEHOZ	TCHZ		7		8		10	ns
Output Hold from Address Change	TAVQX	TOH	3		3		3		ns
Output Enable to Output Valid	TGLQV	TOE		5		6		8	ns
Output Enable to Output in Low Z (1)	TGLQX	TOLZ	2		2		2		ns
Output Disable to Output in High Z (1)	TGHQZ	TOHZ		4		5		8	ns

Note 1: Parameter guaranteed, but not tested.

Read Cycle 1 - \bar{W} High, \bar{G} , \bar{E} Low



Read Cycle 2 - \bar{W} High

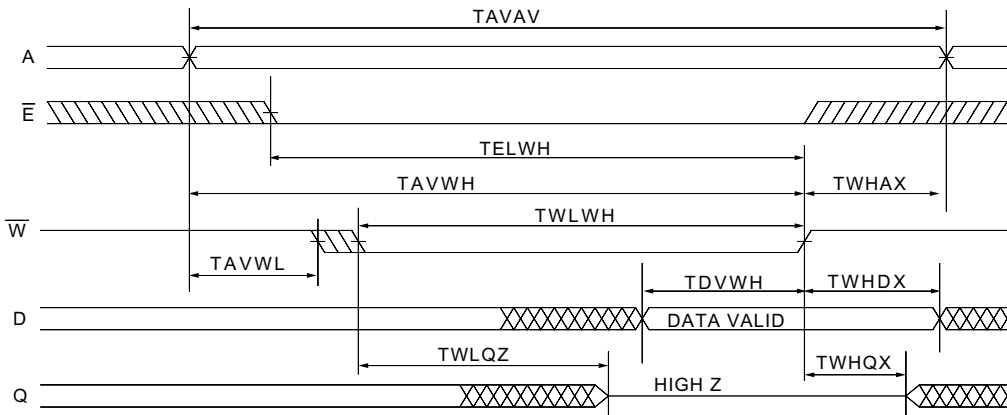


AC Characteristics Write Cycle

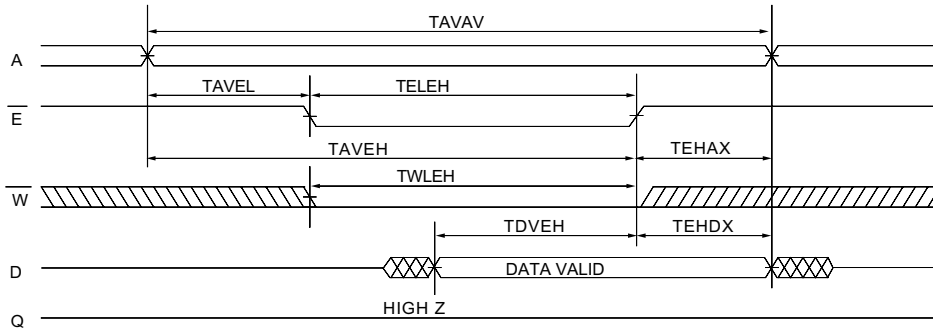
Parameter	Symbol		12ns		15ns		20ns		Units
	JEDEC	Alt.	Min	Max	Min	Max	Min	Max	
Write Cycle Time	TAVAV	TWC	12		15		20		ns
Chip Enable to End of Write	TELWH	TCW	8		9		15		ns
	TELEH	TCW	8		9		15		ns
Address Setup Time	TAVWL	TAS	0		0		0		ns
	TAVEL	TAS	0		0		0		ns
Address Valid to End of Write	TAVWH	TAW	9		10		15		ns
	TAVEH	TAW	9		10		15		ns
Write Pulse Width	TWLWH	TWP	9		10		15		ns
	TWLEH	TWP	9		10		15		ns
Write Recovery Time	TWHAX	TWR	0		0		0		ns
	TEHAX	TWR	0		0		0		ns
Data Hold Time	TWHDX	TDH	0		0		0		ns
	TEHDX	TDH	0		0		0		ns
Write to Output in High Z (1)	TWLQZ	TWHZ	0	5	0	6	0	7	ns
Data to Write Time	TDVWH	TDW	5		6		8		ns
	TDVEH	TDW	5		6		8		ns
Output Active from End of Write (1)	TWHQX	TWLZ	2		2		2		ns

Note 1: Parameter guaranteed, but not tested.

Write Cycle 1 - \overline{W} Controlled



Write Cycle 2 - \bar{E} Controlled



Ordering Information

Commercial (0°C to 70°C)

Part Number	Speed (ns)	Package No.
EDI8L32128V12AC	12	99
EDI8L32128V15AC	15	99
EDI8L32128V20AC	20	99

Industrial (-40°C to +85°C)

Part Number	Speed (ns)	Package No.
EDI8L32128V12AI	12	99
EDI8L32128V15AI	15	99
EDI8L32128V20AI	20	99

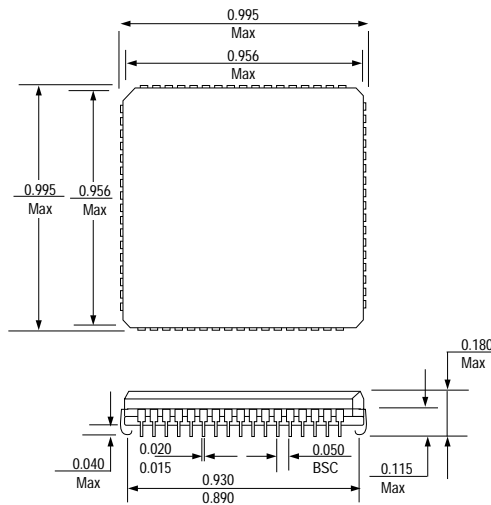
Package Description

Package No. 99
68 Lead PLCC
JEDEC MO-47AE

Theta JA=40°C/W

Theta JC=15°C/W

Weight =4.2g



Electronic Designs Incorporated

• One Research Drive • Westborough, MA 01581USA • 508-366-5151 • FAX 508-836-4850 •

<http://www.electronic-designs.com>

Electronic Designs Inc. reserves the right to change specifications without notice. CAGE No. 66301