



NPN TRIPLE DIFFUSE PLANAR SILICON TRANSISTOR

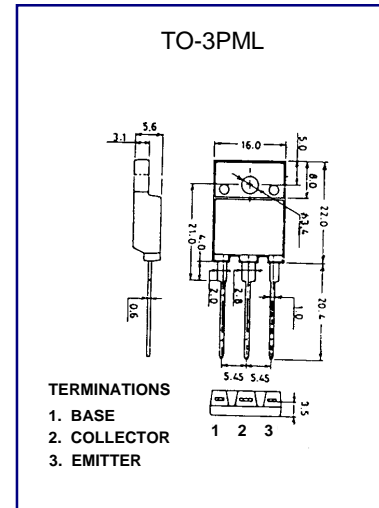
BU2508DF

**COLOR TV HORIZONTAL OUTPUT
APPLICATIONS(No Damper Diode)**

- High Collector-Base Voltage($V_{CB0}=1500V$)
- High Speed Switching

ABSOLUTE MAXIMUM RATINGS ($T_A=25^{\circ}C$)

| Characteristic | Symbol | Rating | Unit |
|---|-----------|---------|-------------|
| Collector-Base Voltage | V_{CB0} | 1500 | V |
| Collector-Emitter Voltage | V_{CEO} | 1500 | V |
| Emitter-Base voltage | V_{EB0} | 6 | V |
| Collector Current (DC) | I_C | 5 | A |
| Collector Dissipation ($T_c=25^{\circ}C$) | P_C | 50 | W |
| Junction Temperature | T_j | 150 | $^{\circ}C$ |
| Storage Temperature | T_{stg} | -50~150 | $^{\circ}C$ |



ELECTRICAL CHARACTERISTICS ($T_A=25^{\circ}C$)

| Characteristic | Symbol | Test Condition | Min | Typ | Max | Unit |
|---|---------------|---------------------------|-----|-----|-----|---------|
| Collector- Emitter Cutoff Current($V_{BE}=0$) | I_{CES} | $V_{CE}=1400 V, R_{BE}=0$ | | | 1.0 | mA |
| Collector Cutoff Current | I_{CBO} | $V_{CB}= 800 V, I_E=0$ | | | 10 | μA |
| Emitter Cutoff Current | I_{EBO} | $V_{EB}= 4V, I_C=0$ | | | 1.0 | mA |
| DC Current Gain | hFE | $V_{CE}= 5V, I_C=1A$ | 8 | | | |
| Collector- Emitter Saturation Voltage | $V_{CE(sat)}$ | $I_C= 4 A, I_B= 0.8A$ | | | 5.0 | V |