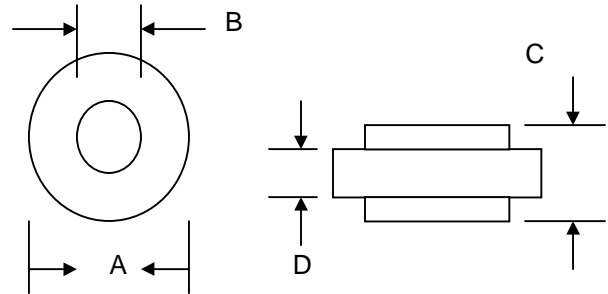


40A GLASS PASSIVATED AVALANCHE BUTTON DIODE

Features

- Glass Passivated Die Construction
- High Power Capacity
- Avalanche Voltage 24 to 32 Volts
- High Surge Current Capability
- Low Cost Construction Utilizing Void-Free Molded Plastic Technique



Mechanical Data

- Case: Molded Plastic
- Terminals: Plated Terminals Solderable per MIL-STD-202, Method 208
- Polarity: Color Ring Denotes Cathode End
- Weight: 1.8 grams (approx.)
- Mounting Position: Any

Dim	AR		ARS	
	Min	Max	Min	Max
A	10.03	10.29	8.31	8.81
B	5.54	5.64	5.54	5.64
C	5.94	6.25	5.94	6.25
D	4.19	4.45	4.19	4.45

All Dimensions in mm

S Suffix Designates ARS Package
 No Suffix Designates AR Package

Maximum Ratings and Electrical Characteristics @ $T_A=25^{\circ}\text{C}$ unless otherwise specified

Single Phase, half wave, 60Hz, resistive or inductive load.
 For capacitive load, derate current by 20%.

Characteristic	Symbol	AR/S2540	Unit
Peak Repetitive Reverse Voltage Working Peak Reverse Voltage DC Blocking Voltage	V_{RRM} V_{RWM} V_R	20	V
Average Rectified Output Current @ $T_A = 150^{\circ}\text{C}$	I_O	40	A
Breakdown Voltage Min. Breakdown Voltage Max.	V_{BR}	24 32	V
Non-Repetitive Peak Forward Surge Current 8.3ms Single half sine-wave superimposed on rated load (JEDEC Method) @ $T_J = 150^{\circ}\text{C}$	I_{FSM}	600	A
Peak Reverse Surge Current	I_{RSM}	150	A
Forward Voltage @ $I_F = 100\text{A}$	V_{FM}	1.05	V
Peak Reverse Current at Rated DC Blocking Voltage @ $T_C = 25^{\circ}\text{C}$	I_{RM}	200	nA
Typical Thermal Resistance Junction to Case (Note 1)	$R_{\theta JC}$	0.8	K/W
Operating and Storage Temperature Range	T_J, T_{STG}	-50 to +175	$^{\circ}\text{C}$

Note: 1. Thermal Resistance: Junction to case, single side cooled.

ORDERING INFORMATION

Product No.	Package Type	Shipping Quantity
AR2540	10mm Button	1000 Units/Box
ARS2540	8.6mm Button	1000 Units/Box

Shipping quantity given is for minimum packing quantity only. For minimum order quantity, please consult the Sales Department.

Won-Top Electronics Co., Ltd (WTE) has checked all information carefully and believes it to be correct and accurate. However, WTE cannot assume any responsibility for inaccuracies. Furthermore, this information does not give the purchaser of semiconductor devices any license under patent rights to manufacturer. WTE reserves the right to change any or all information herein without further notice.

WARNING: DO NOT USE IN LIFE SUPPORT EQUIPMENT. WTE power semiconductor products are not authorized for use as critical components in life support devices or systems without the express written approval.

Won-Top Electronics Co., Ltd.

No. 44 Yu Kang North 3rd Road, Chine Chen Dist., Kaohsiung, Taiwan

Phone: 886-7-822-5408 or 886-7-822-5410

Fax: 886-7-822-5417

Email: sales@wontop.com

Internet: <http://www.wontop.com>

We power your everyday.