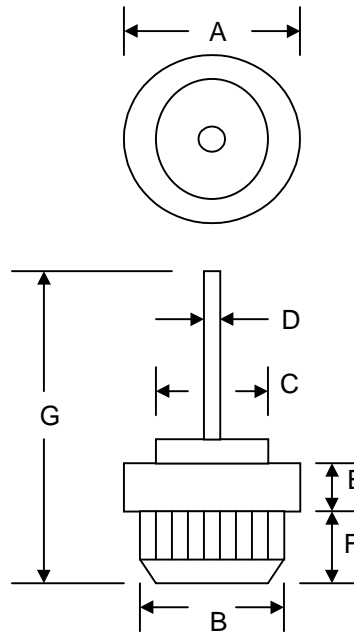


### Features

- Diffused Junction
- Low Leakage
- Low Cost
- High Surge Current Capability
- Typical IR less than 10 $\mu$ A

### Mechanical Data

- Case: All Copper Case and Components Hermetically Sealed
- Terminals: Contact Areas Readily Solderable
- Polarity: Cathode to Case (Reverse Units Are Available Upon Request and Are Designated By An "R" Suffix, i.e. PF5002R or PF5010R)
- Polarity: Red Color Equals Standard, Black Color Equals Reverse Polarity
- Mounting Position: Any



DO-21		
Dim	Min	Max
A	15.63	16.14
B	12.75	12.83
C	8.89	10.04
D	1.25	1.30
E	3.05	3.30
F	5.59	6.1
G	28.82	—
All Dimensions in mm		

### Maximum Ratings and Electrical Characteristics @T<sub>A</sub>=25°C unless otherwise specified

Single Phase, half wave, 60Hz, resistive or inductive load.  
 For capacitive load, derate current by 20%.

Characteristic	Symbol	PF5000	PF5001	PF5002	PF5004	PF5006	PF5008	PF5010	Unit
Peak Repetitive Reverse Voltage	V <sub>RRM</sub>								
Working Peak Reverse Voltage	V <sub>RWM</sub>	50	100	200	400	600	800	1000	V
DC Blocking Voltage	V <sub>R</sub>								
RMS Reverse Voltage	V <sub>R(RMS)</sub>	35	70	140	280	420	560	700	V
Average Rectified Output Current @T <sub>A</sub> = 150°C	I <sub>O</sub>	50							A
Non-Repetitive Peak Forward Surge Current 8.3ms Single half sine-wave superimposed on rated load (JEDEC Method)	I <sub>FSM</sub>	500							A
Forward Voltage @I <sub>F</sub> = 100A	V <sub>FM</sub>	1.08							V
Peak Reverse Current @T <sub>A</sub> = 25°C	I <sub>RM</sub>	10							$\mu$ A
At Rated DC Blocking Voltage @T <sub>A</sub> = 100°C		500							
Typical Junction Capacitance (Note 1)	C <sub>j</sub>	300							pF
Typical Thermal Resistance Junction to Case (Note 2)	R <sub><math>\theta</math>JC</sub>	1.2							K/W
Operating and Storage Temperature Range	T <sub>J</sub> , T <sub>STG</sub>	-65 to +175							°C

#### \*Glass passivated forms are available upon request

Note: 1. Measured at 1.0 MHz and applied reverse voltage of 4.0V D.C.  
 2. Thermal Resistance: Junction to case, single side cooled.

## ORDERING INFORMATION

Product No.	Package Type	Shipping Quantity
PF5000	Press Fit	100 Units/Tray
PF5001	Press Fit	100 Units/Tray
PF5002	Press Fit	100 Units/Tray
PF5004	Press Fit	100 Units/Tray
PF5006	Press Fit	100 Units/Tray
PF5008	Press Fit	100 Units/Tray
PF5010	Press Fit	100 Units/Tray

Shipping quantity given is for minimum packing quantity only. For minimum order quantity, please consult the Sales Department.

Won-Top Electronics Co., Ltd (WTE) has checked all information carefully and believes it to be correct and accurate. However, WTE cannot assume any responsibility for inaccuracies. Furthermore, this information does not give the purchaser of semiconductor devices any license under patent rights to manufacturer. WTE reserves the right to change any or all information herein without further notice.

**WARNING:** DO NOT USE IN LIFE SUPPORT EQUIPMENT. WTE power semiconductor products are not authorized for use as critical components in life support devices or systems without the express written approval.

**Won-Top Electronics Co., Ltd.**

No. 44 Yu Kang North 3rd Road, Chine Chen Dist., Kaohsiung, Taiwan

**Phone:** 886-7-822-5408 or 886-7-822-5410

**Fax:** 886-7-822-5417

**Email:** sales@wontop.com

**Internet:** <http://www.wontop.com>

*We power your everyday.*