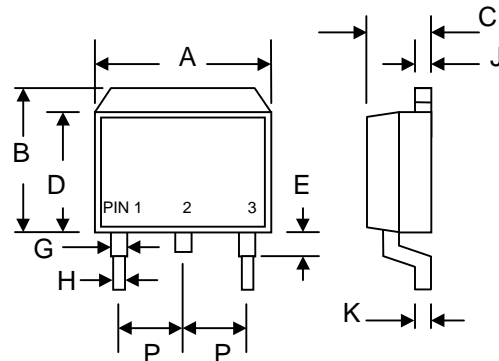


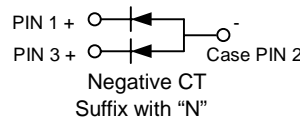
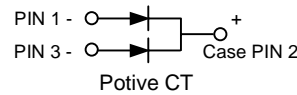
### Features

- Schottky Barrier Chip
- Guard Ring Die Construction for Transient Protection
- High Current Capability
- Low Power Loss, High Efficiency
- High Surge Current Capability
- For Use in Low Voltage, High Frequency Inverters, Free Wheeling, and Polarity Protection Applications



### Mechanical Data

- Case: Molded Plastic
- Terminals: Plated Leads Solderable per MIL-STD-202, Method 208
- Polarity: Cathode Band
- Weight: 1.7 grams (approx.)
- Mounting Position: Any
- Marking: Type Number
- Standard Packaging: 24mm Tape (EIA-481)



D <sup>2</sup> PAK/TO-263		
Dim	Min	Max
A	9.8	10.4
B	9.6	10.6
C	4.4	4.8
D	8.5	9.1
E	—	0.7
G	1.0	1.4
H	—	0.9
J	1.2	1.4
K	0.3	0.7
P	2.35	2.75
All Dimensions in mm		

### Maximum Ratings and Electrical Characteristics @T<sub>A</sub>=25°C unless otherwise specified

Single Phase, half wave, 60Hz, resistive or inductive load. For capacitive load, derate current by 20%.

Characteristic	Symbol	SB 1620DC	SB 1630DC	SB 1640DC	SB 1650DC	SB 1660DC	SB 1680DC	SB 16100DC	Unit
Peak Repetitive Reverse Voltage Working Peak Reverse Voltage DC Blocking Voltage	V <sub>RRM</sub> V <sub>RWM</sub> V <sub>R</sub>	20	30	40	50	60	80	100	V
RMS Reverse Voltage	V <sub>R(RMS)</sub>	14	21	28	35	42	56	70	V
Average Rectified Output Current @T <sub>C</sub> = 90°C	I <sub>O</sub>	16							A
Non-Repetitive Peak Forward Surge Current 8.3ms Single half sine-wave superimposed on rated load (JEDEC Method)	I <sub>FSM</sub>	150							A
Forward Voltage @I <sub>F</sub> = 8.0A	V <sub>FM</sub>	0.55		0.75		0.85		V	
Peak Reverse Current @T <sub>A</sub> = 25°C At Rated DC Blocking Voltage @T <sub>A</sub> = 100°C	I <sub>RM</sub>	0.5 100							mA
Typical Junction Capacitance (Note 1)	C <sub>j</sub>	700							pF
Typical Thermal Resistance Junction to Ambient	R <sub>θJA</sub>	60							K/W
Operating and Storage Temperature Range	T <sub>j</sub> , T <sub>STG</sub>	-50 to +150							°C

Note: 1. Measured at 1.0 MHz and applied reverse voltage of 4.0V D.C.

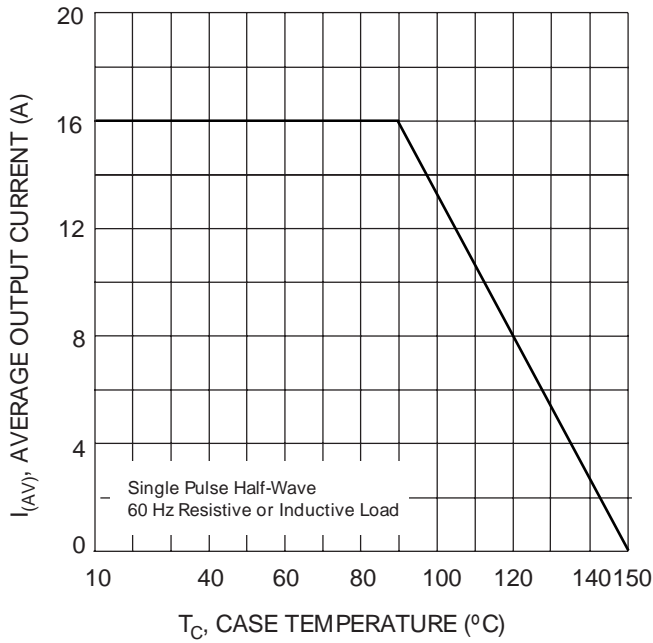


Fig. 1 Forward Current Derating Curve

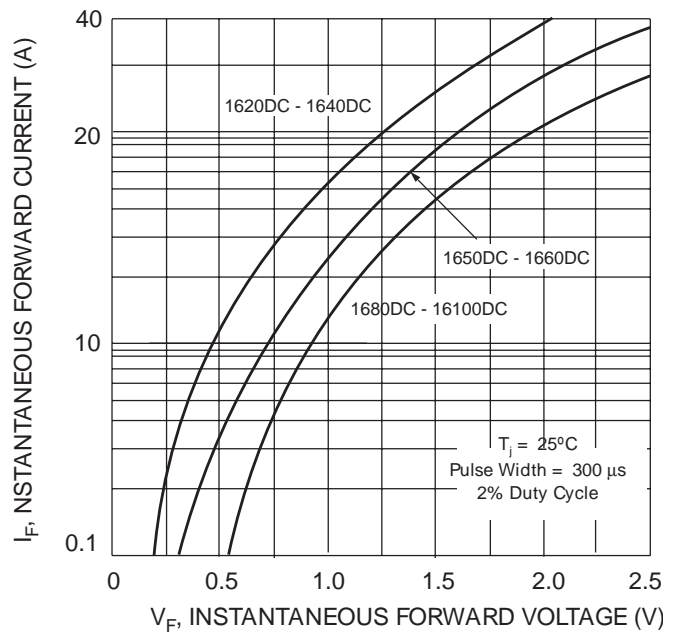


Fig. 2 Typical Forward Characteristics

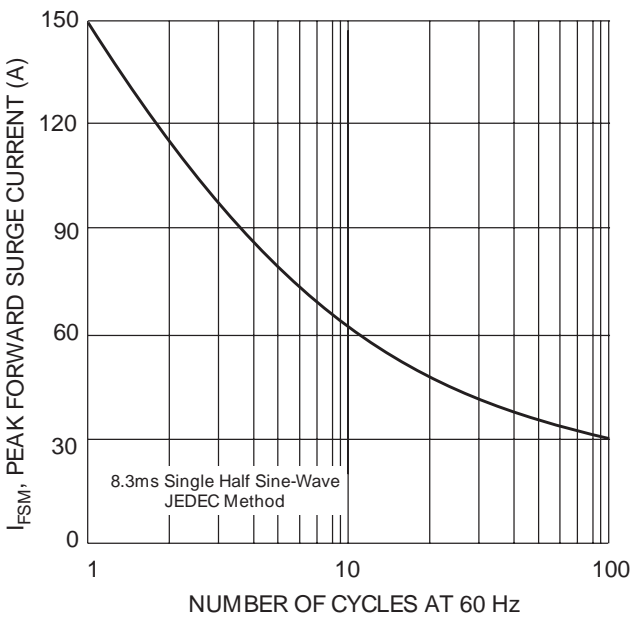


Fig. 3 Maximum Non-Repetitive Peak Fwd Surge Current

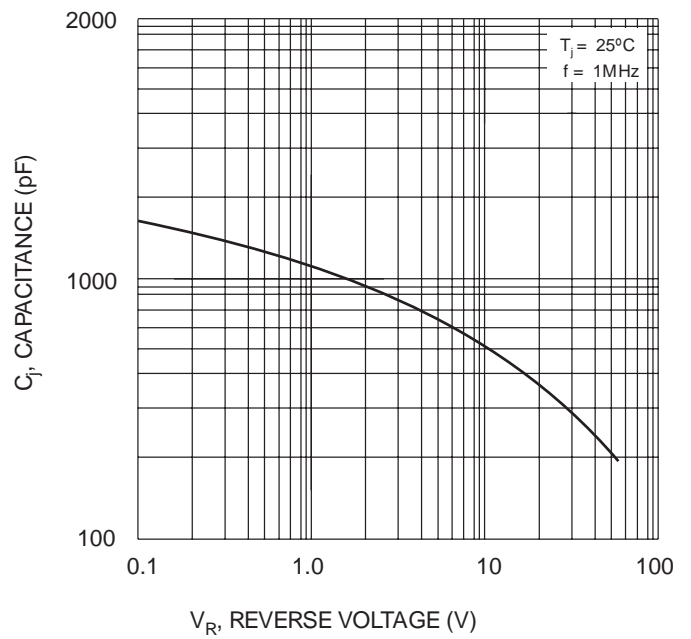


Fig. 4 Typical Junction Capacitance

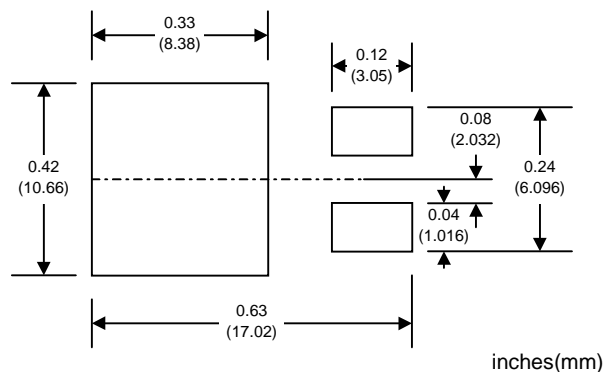
## ORDERING INFORMATION

Product No.◆	Package Type	Shipping Quantity
SB1620DC-T3	D <sup>2</sup> PAK	800/Tape & Reel
SB1630DC-T3	D <sup>2</sup> PAK	800/Tape & Reel
SB1640DC-T3	D <sup>2</sup> PAK	800/Tape & Reel
SB1650DC-T3	D <sup>2</sup> PAK	800/Tape & Reel
SB1660DC-T3	D <sup>2</sup> PAK	800/Tape & Reel
SB1680DC-T3	D <sup>2</sup> PAK	800/Tape & Reel
SB16100DC-T3	D <sup>2</sup> PAK	800/Tape & Reel

◆T3 suffix refers to a 13" reel.

Shipping quantity given is for minimum packing quantity only. For minimum order quantity, please consult the Sales Department.

## RECOMMENDED FOOTPRINT



Won-Top Electronics Co., Ltd (WTE) has checked all information carefully and believes it to be correct and accurate. However, WTE cannot assume any responsibility for inaccuracies. Furthermore, this information does not give the purchaser of semiconductor devices any license under patent rights to manufacturer. WTE reserves the right to change any or all information herein without further notice.

**WARNING:** DO NOT USE IN LIFE SUPPORT EQUIPMENT. WTE power semiconductor products are not authorized for use as critical components in life support devices or systems without the express written approval.

**Won-Top Electronics Co., Ltd.**

No. 44 Yu Kang North 3rd Road, Chine Chen Dist., Kaohsiung, Taiwan

**Phone:** 886-7-822-5408 or 886-7-822-5410

**Fax:** 886-7-822-5417

**Email:** sales@wontop.com

**Internet:** http://www.wontop.com

*We power your everyday.*