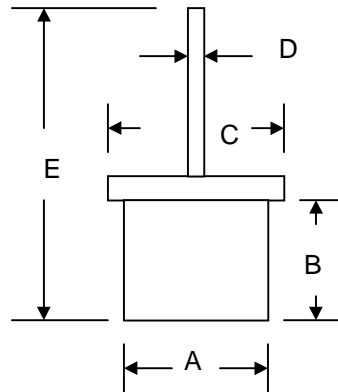


Features

- Glass Passivated Die Construction
- Low Leakage
- Low Cost
- High Surge Current Capability
- Typical IR less than 10 μ A

Mechanical Data

- Case: All Copper Case and Components Hermetically Sealed
- Terminals: Contact Areas Readily Solderable
- Polarity: Cathode to Case (Reverse Units Are Available Upon Request and Are Designated By An "R" Suffix, i.e. TC2502R or TC2504R)
- Polarity: Red Color Equals Standard, Black Color Equals Reverse Polarity
- Mounting Position: Any



Tin Can		
Dim	Min	Max
A	8.70	8.75
B	6.35	6.40
C	10.45	10.50
D	1.45	1.49
E	27.60	—
All Dimensions in mm		

Maximum Ratings and Electrical Characteristics @ $T_A=25^\circ\text{C}$ unless otherwise specified

Single Phase, half wave, 60Hz, resistive or inductive load.
 For capacitive load, derate current by 20%.

Characteristic	Symbol	TC2500	TC2501	TC2502	TC2503	TC2504	Unit
Peak Repetitive Reverse Voltage	V_{RRM}	50	100	200	300	400	V
Working Peak Reverse Voltage	V_{RWM}						
DC Blocking Voltage	V_R						
RMS Reverse Voltage	$V_{R(RMS)}$	35	70	140	210	280	V
Average Rectified Output Current @ $T_A = 150^\circ\text{C}$	I_O	25					A
Non-Repetitive Peak Forward Surge Current 8.3ms Single half sine-wave superimposed on rated load (JEDEC Method)	I_{FSM}	400					A
Forward Voltage @ $I_F = 50\text{A}$	V_{FM}	1.0					V
Peak Reverse Current @ $T_A = 25^\circ\text{C}$ At Rated DC Blocking Voltage @ $T_A = 100^\circ\text{C}$	I_{RM}	10 500					μA
Typical Junction Capacitance (Note 1)	C_j	300					pF
Typical Thermal Resistance Junction to Case (Note 2)	$R_{\theta JC}$	1.0					K/W
Operating and Storage Temperature Range	T_J, T_{STG}	-65 to +175					$^\circ\text{C}$

Note: 1. Measured at 1.0 MHz and applied reverse voltage of 4.0V D.C.
 2. Thermal Resistance: Junction to case, single side cooled.

ORDERING INFORMATION

Product No.	Package Type	Shipping Quantity
TC2500	Press Fit	100 Units/Tray
TC2501	Press Fit	100 Units/Tray
TC2502	Press Fit	100 Units/Tray
TC2503	Press Fit	100 Units/Tray
TC2504	Press Fit	100 Units/Tray

Shipping quantity given is for minimum packing quantity only. For minimum order quantity, please consult the Sales Department.

Won-Top Electronics Co., Ltd (WTE) has checked all information carefully and believes it to be correct and accurate. However, WTE cannot assume any responsibility for inaccuracies. Furthermore, this information does not give the purchaser of semiconductor devices any license under patent rights to manufacturer. WTE reserves the right to change any or all information herein without further notice.

WARNING: DO NOT USE IN LIFE SUPPORT EQUIPMENT. WTE power semiconductor products are not authorized for use as critical components in life support devices or systems without the express written approval.

Won-Top Electronics Co., Ltd.

No. 44 Yu Kang North 3rd Road, Chine Chen Dist., Kaohsiung, Taiwan

Phone: 886-7-822-5408 or 886-7-822-5410

Fax: 886-7-822-5417

Email: sales@wontop.com

Internet: <http://www.wontop.com>

We power your everyday.